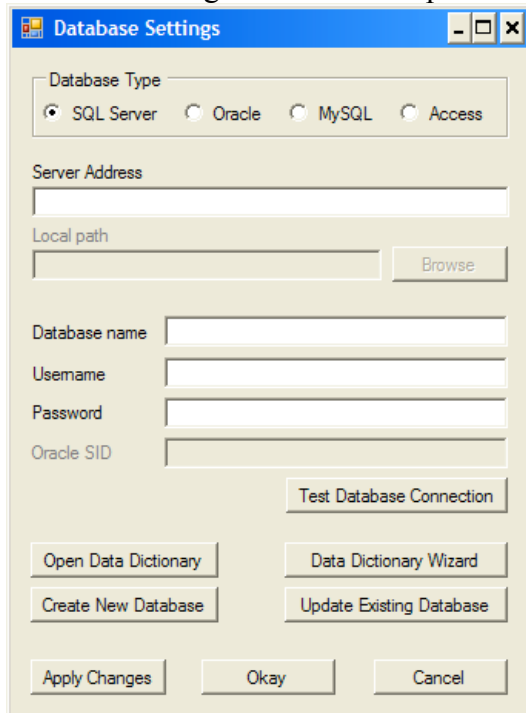


# Getting Started



## Database Settings

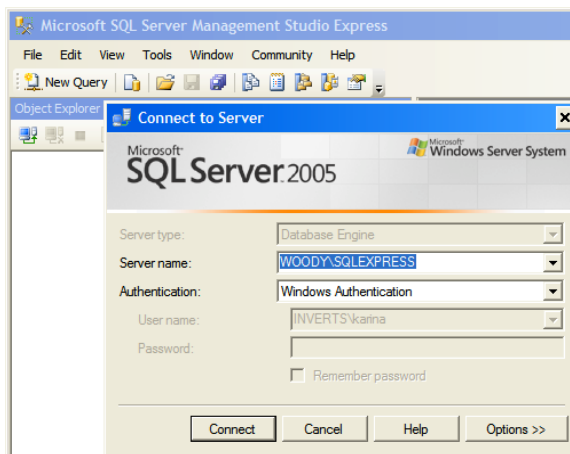
Database Settings window will open automatically when starting for the first time.



1. If not you do not have an existing database, create a blank database in your preferred database application.
2. Select database type (SQL Server, Oracle\*, MySQL, or Access)
  - a. Access database –
    - i. Local path: Click browse button to browse to local database, either your existing or blank database.
    - ii. Enter username and password if necessary, otherwise leave blank.
  - b. Oracle database –
  - c. MySQL database –
    - i. Server Address: Enter the address where the MySQL database can be found. If the database is located on

the same computer as Syngraph, you will enter 'localhost' here.

- ii. Database name: Enter the name of the database Syngraph will be accessing.
- iii. Username and password: Enter the username and password Syngraph will use to access the database. The Syngraph user should have create table, alter table, insert, delete, and update privileges.
- d. SQL Server database –



- i. Server Address: Enter the address where the SQL Server database can be found. If the database is located on the same computer as Syngraph, you can find this information when you open SQL

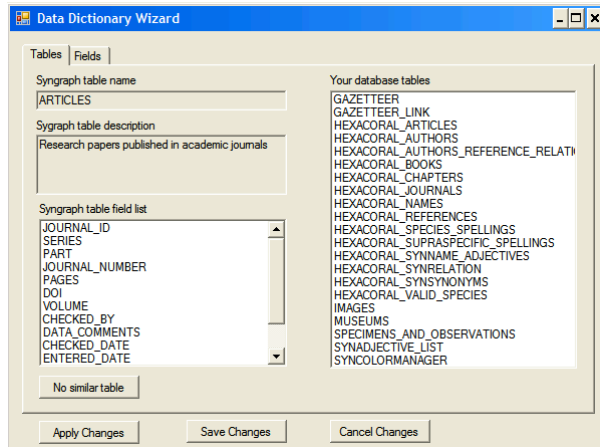
Server Management under Server Name on the log-in screen.

- ii. Database name: Enter the name of the database Syngraph will be accessing.
  - iii. Username and password: If the database is located on the same computer as Syngraph, and the Authentication method is 'Windows Authentication', you may leave these fields blank. Otherwise, enter the username and password Syngraph will use to access the database. The Syngraph user should have create table, alter table, insert, delete, and update privileges.
3. Test database connection to make sure Syngraph is connecting to the database properly. Click the 'Apply Changes' button at the bottom of the window to save your database settings.
4. If you don't have an existing database, click the 'Create New Database' button. You are now ready to start using Syngraph, and entering information.
5. If you are using an existing database, click 'Data Dictionary Wizard' button.
  - a. See Data Dictionary Wizard instructions.
  - b. Once finished with the Data Dictionary Wizard, click the 'Update Existing Database' button. This will create any tables or fields which Syngraph needs which are not in your current database.

# Data Dictionary Wizard

The data dictionary wizard guides you through linking the tables and fields that Syngraph needs in order to operate properly to your existing database.

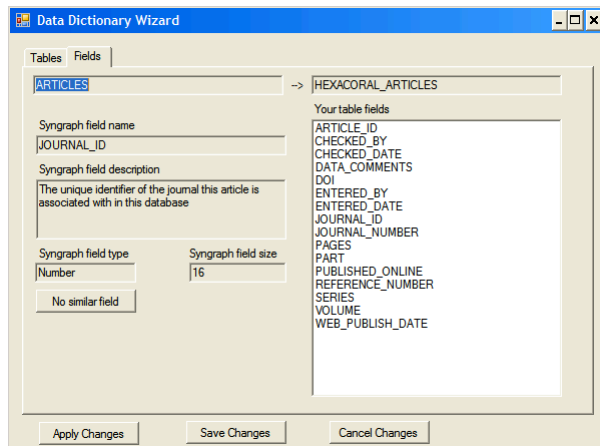
## Tables



1. The Data Dictionary Wizard shows each table it expects one at a time in alphabetical order. The name of the table, a short description of the table, and the list of fields that Syngraph expects are displayed on the left. Tables in your database are displayed on the right.
  - a. If your database does not have a similar table to the one displayed, click the 'No similar table' button,

- b. If your database does have a similar table, click the name of the table in your database that is similar to the table Syngraph expects. You will be asked if you want to link your table to the Syngraph table. Click 'Yes' to go on to link the Syngraph table fields to the existing database table fields, 'No' if you clicked the wrong table name.

## Fields



2. The Syngraph table name and your existing table name are displayed at the top of the window. The Syngraph field name, a short description, the field type, and the size of the field are displayed on the left. Fields in your existing table are displayed on the right.
  - a. If your database table does not have a similar field to the one displayed, click the 'No similar

- b. If your database table does have a similar field, click the name of the field in your database table that is similar to the field Syngraph expects. You will be asked if you want to link your field to the Syngraph field. Click

‘Yes’ to go on to the next field in the table, ‘No’ if you clicked the wrong field name.

c. Notes:

- i. Your field type should be the same as the Syngraph field type. If Syngraph expects a text field, and your field is a number field, you will get errors when attempting to insert information in Syngraph.
- ii. Each field in your database can only be linked to one Syngraph field. Fields selected are removed from the list after selection.
- iii. Don’t worry if you have extra fields in your database tables. Syngraph just won’t use them.
- iv. Your database columns must allow for zero length strings.
- v. Syngraph will automatically insert the next value for primary keys. If your primary key fields automatically increment themselves, errors could result when attempting to insert new information.

- d. Once you have linked all the fields in a table, you will be taken to the next table on the tables tab. Like the table fields, each table in your database can only be associated with a single Syngraph table. Tables will be removed from the existing table list after being linked to a Syngraph table.

3. Once you have finished linking all the tables and fields in your existing database to Syngraph tables and fields, make sure to click either the ‘Apply Changes’ button to save the changes and keep the Data Dictionary Wizard open, or the ‘Save Changes’ button to save the changes and close the Data Dictionary Wizard.

## **Project Menu**

### ***About Syngraph***

Clicking *Project* → *About Syngraph* brings up a window with information about the Syngraph application. A link to the Syngraph home page on the web is also provided.

### ***Load Existing . . .***

Clicking *Project* → *Load Existing . . .* brings up the Data Dictionary Wizard and Database Settings windows. Users should make sure Syngraph can connect using the Database Settings window (See section on Database Settings window) before attempting to link their database to Syngraph using the Data Dictionary Wizard window (See section on Data Dictionary Wizard window).

### ***New . . .***

Clicking *Project* → *New . . .* brings up the Database Settings window. Users should set up a blank database in the relational database application they wish to use. Then enter the connection information needed to connect to the blank database (See section on Database Settings window). Once Syngraph can successfully connect to the database, click on the 'Create New Database' button. Syngraph will automatically create all the tables and fields necessary.

### ***Settings . . .***

Clicking *Project* → *Settings . . .* brings up the Database Settings window. See section on Database Settings for more information.

### ***Exit***

Click *Project* → *Exit* to close the Syngraph application.